



**KEDUTAAN BESAR REPUBLIK INDONESIA  
BERLIN**

Berlin, 13 November 2025

Nomor : 212/DIK/11/2025/08  
Lampiran : 1 (satu) berkas  
Perihal : Informasi Pembukaan Program *International Mobility* Erasmus+  
Tahun 2026

Kepada Yth.

- Kepala Lembaga Layanan Pendidikan Tinggi Wilayah I – XVII
- Pimpinan Perguruan Tinggi Negeri
- Pimpinan Perguruan Tinggi Swasta (info ini disampaikan via LLDIKTI)

di

Tempat

Erasmus+ adalah program Uni Eropa yang mendukung pendidikan, pelatihan, pemuda, dan olahraga. Program ini menawarkan berbagai peluang bagi organisasi seperti universitas, serta individu seperti mahasiswa, peneliti, dan tenaga profesional, untuk melakukan *international mobility* berupa pertukaran mahasiswa, pertukaran dosen dan pertukaran staf antar perguruan tinggi di Uni Eropa (termasuk Jerman) dengan partner universitas tersebut di luar Uni Eropa (termasuk Indonesia). Program ini telah ada sejak tahun 1987, awalnya berfokus pada mahasiswa Eropa, namun telah berkembang menjadi program yang lebih luas dan inklusif.

Menindaklanjuti Webinar Sosialisasi Program *International Mobility* Erasmus+ yang telah dilakukan oleh KBRI Berlin pada hari Rabu, 12 November 2025, dengan ini kami menyampaikan materi sosialisasi tersebut (terlampir) kepada Bapak/Ibu untuk disebarakan ke seluruh civitas akademika di institusi yang Bapak/Ibu pimpin. Kami juga berharap agar institusi Bapak/Ibu dapat memanfaatkan kesempatan untuk *apply* pada program ini karena pengajuan aplikasi program ini telah dibuka pada tanggal 12 November 2025 hingga **19 Februari 2026** (informasi terlampir). Untuk informasi lebih lanjut terkait program ini, Bapak/Ibu dapat menghubungi *contact person* program ini sebagaimana terlampir.

Demikian informasi ini kami sampaikan. Terima kasih atas perhatiannya.

**a.n. Kepala Perwakilan RI  
Atase Pendidikan dan Kebudayaan**

  
**Dr. rer. nat. Roniyus Marjunus**  
**NIP. 197703182000121003**

Tembusan Yth.:

1. KUALI KBRI Berlin.
2. Sekretaris Jenderal Kementerian Pendidikan Tinggi, Sains dan Teknologi (Kemdiktisaintek).
3. Sekretaris Jenderal Kementerian Pendidikan Dasar dan Menengah (Kemdikdasmen).
4. Direktorat Jenderal Pendidikan Tinggi Kemdiktisaintek.
5. Kepala Biro Perencanaan dan Kerjasama Kemdikdasmen.



# Erasmus+

## MOBILITY PROJECT FOR HIGHER EDUCATION STUDENTS AND STAFF

(Student Credit Mobility and Staff Mobility)

### Key Action 171: Learning Mobility of Individuals



## Erasmus+

**Destriani Nugroho**  
**Programme Manager**  
**Delegation of the European Union to Indonesia and Brunei Darussalam**



# Erasmus+

---

## What is Erasmus+ ?

- ❖ **Funded by the European Union (EU).**
- ❖ **Supporting education, training, youth and sport.**
- ❖ **Fosters international cooperation between EU and other countries.**

**For:**

- ❖ **Students of higher education, doctoral candidates, university staff.**
- ❖ **Higher education institutions (HEIs).**



# Erasmus+

## Erasmus+ programme

### ***Academic Mobility***

International (Credit)  
Mobility for Students  
and Staff

Erasmus Mundus  
Joint Masters

### ***Academic Cooperation***

Capacity Building in  
Higher Education

Jean Monnett

... and many more ....





# Erasmus+

## Objectives of Erasmus+

### ***For Students and Staff:***

- ✓ Acquire competences (knowledge, skills, attitudes)
- ✓ Support professional development
- ✓ Enhance foreign languages competences
- ✓ Deepen understanding of other cultures

### ***For Higher Education Institutions, to:***

- ✓ Increase capacities
- ✓ Strengthen International dimension





# Erasmus+

## Which countries can participate in Erasmus+?

### EU Member States and Third countries associated to the Erasmus+ Programme

#### **27 EU Member States:**

Austria, Belgium, Bulgaria, Croatia, Cyprus, Czech Republic, Denmark, Estonia, Finland, France, Germany, Greece, Hungary, Ireland, Italy, Latvia, Lithuania, Luxembourg, Malta, Netherlands, Poland, Portugal, Romania, Slovakia, Slovenia, Spain and Sweden.

#### **6 third countries associated to the Programme:**

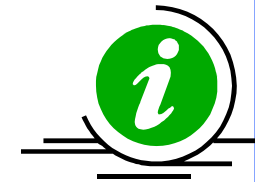
Turkey, Iceland, Liechtenstein, Norway, North Macedonia, Serbia

***Total 33 countries***

### Third countries not associated to the Programme

#### Regions:

1. *Western Balkans*
2. *Neighbourhood East*
3. *South-Mediterranean Countries*
4. *Russian Federation*
5. *Asia*
6. *Central Asia*
7. *Middle East*
8. *Pacific*
9. *Sub-Saharan Africa*
10. *Latin America*
11. *Caribia*
12. *US and Canada*
13. *Andorano, Monaco, San Marino. Vatican*
14. *Faroe Island, Switzerland, United Kingdom*





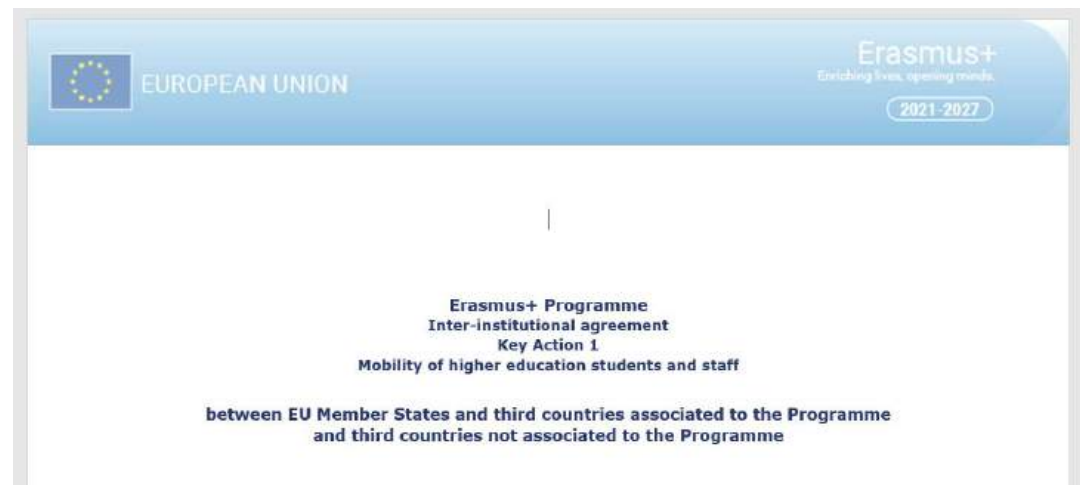
# Erasmus+

## Who can apply for Mobility Project

- ✓ **Higher Education Institutions (HEIs) in 33 countries**
  - ✓ These HEIs must have been awarded the **Erasmus Charter for Higher Education (ECHE)** that contains:
    - ☐ *Provide all the necessary support to mobile participants, including online linguistic preparation.*
    - ☐ *Carry out mobility for the purpose of studying and teaching only.*
    - ☐ *Select prospective participants and award mobility grants in a fair, transparent, coherent and documented way.*
    - ☐ *Fully recognises the outcomes from the learning period abroad.*
- ☐ HEIs from partner countries must sign **inter-institutional agreement.**

Inter-institutional agreement: <https://erasmus-plus.ec.europa.eu/document/editable-bilateral-multilateral-agreement-international-mobility>

- Agreement to cooperate on the exchange of students and / or staff in the framework of Erasmus+.
- Agreement on the number of students, staff and lecturers undertaking mobility per academic year, credit recognition, provision of support, etc.
- Partners commit to running selection procedures for mobility activities that are fair, transparent and documented, ensuring equal opportunities to participants eligible for mobility.
- HEIs must sign an inter-institutional agreement before any mobilities take place.



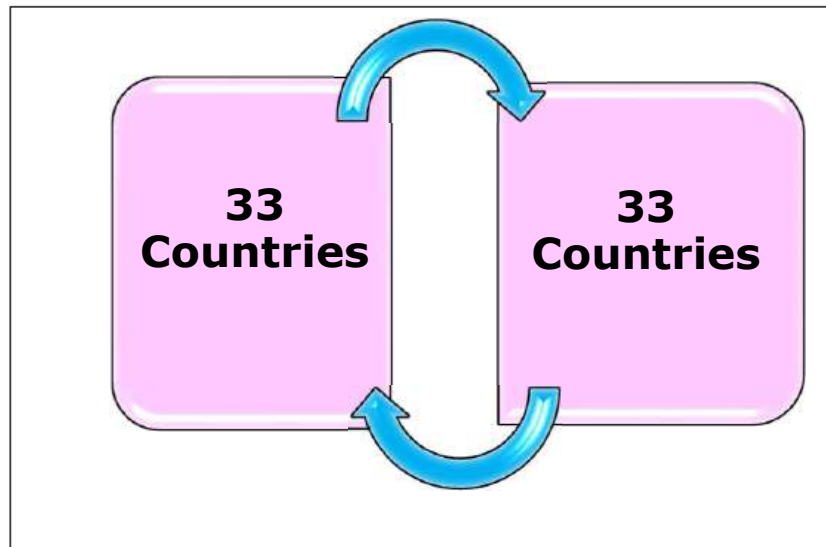




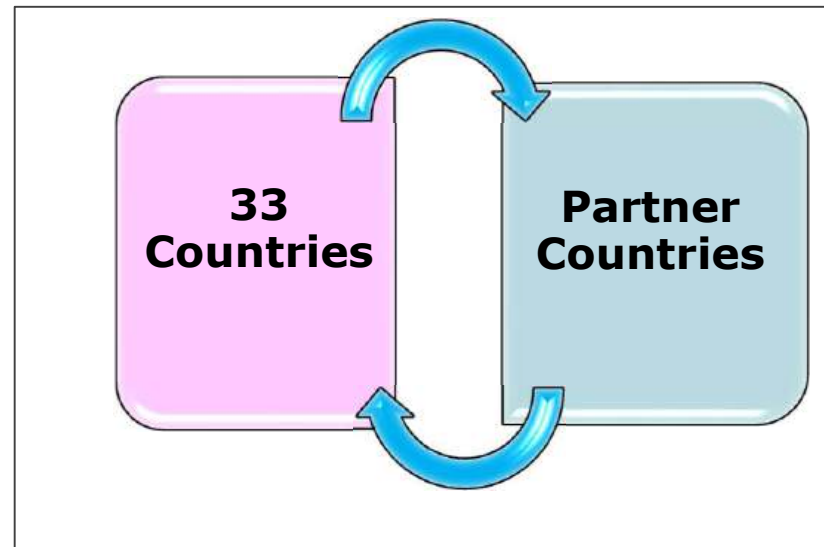
# Erasmus+

## Mobility Scheme for Students, Lecturers and University Staff

### European Dimension



### International Dimension



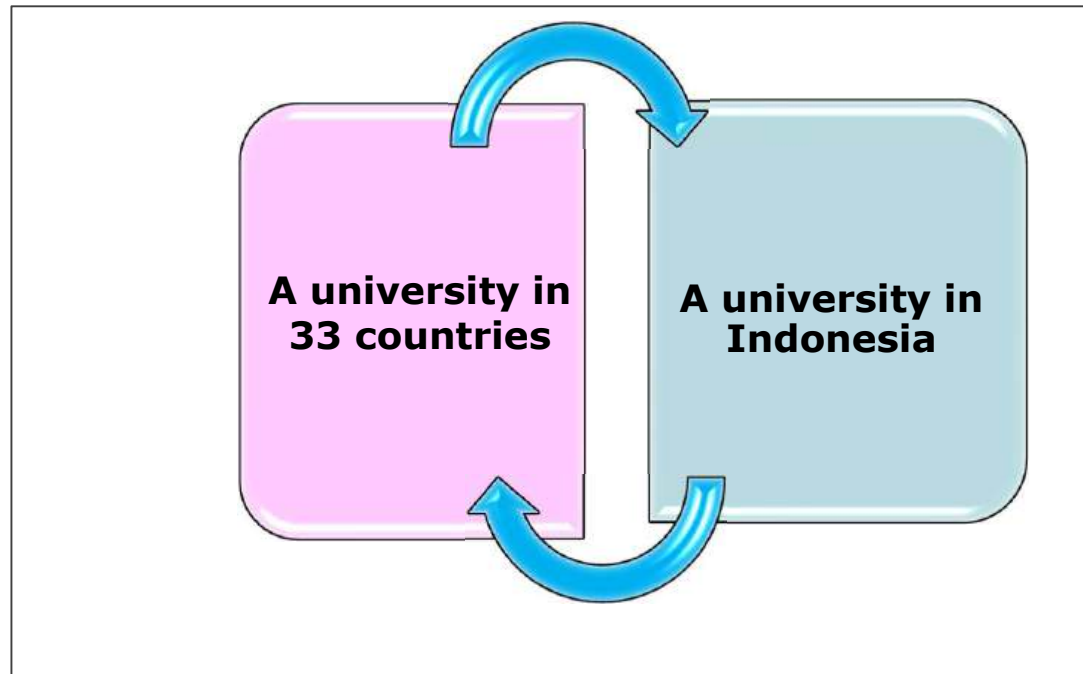


# Erasmus+

## Example of a University in Indonesia

### International Dimension

Students, Lecturers and University Staff





# Erasmus+

## Mobility for Students (1)

- ✓ **Levels: short cycle: bachelor/master/doctoral**
- ✓ **Students must be registered in a HEI**
- ✓ **Enrolled in studies leading to a degree**
- ✓ **Must be enrolled at least in the second year of higher education studies**
- ✓ **Learners with special needs can apply – top-up funding available**

### **Purpose:**

- **To study abroad**
- **To undertake traineeships / internships abroad - integrated part of the student's study programme.**
- ✓ **Duration: short-term studies or traineeships: 2-12 months.**



# Erasmus+

---

## **Student Mobility (2)**

**Limited period of study / internship abroad for gaining credits**



**Mobility Phase: 2-12 months of stay for learners**



**Students return to home institution**



**Credit recognised**



**Learners complete their studies**



# Erasmus+

---

## Lecturer/University Staff Mobility

### Lecturer / University Staff

- Teaching and/or training abroad
- **Teaching activity:** a minimum of 8 hours of teaching per week
- **Teaching and training activity:** a minimum of 4 hours of teaching per week
- Minimum: **5 days** (excluding travels)
- Maximum: **2 months**
- Plus: 2 **additional days of travel** (1 before + 1 after)





# Erasmus+

## Funding



### ***Student mobility:***

- 33 countries to partner countries: EUR 700/month
- Partner countries to 33 countries: EUR 800-900/month
- Students with special needs will receive top-up funding

***Staff mobility:*** EUR 140-180 / day



**Travel Cost:** EUR 23 – EUR 1,500



# Erasmus+



Travel costs	EUR per participant
< 100km	€ 20
100 - 499	€ 180
500 - 1999	€ 275
2000 - 2999	€ 360
3000 - 3999	€ 530
4000 - 7999	€ 820
> 8000	€ 1500



# Erasmus+

## Distance Calculator

<https://erasmus-plus.ec.europa.eu/resources-and-tools/distance-calculator>

Calculate a distance →

### Calculate a distance

Type in the fields Start and End or **right-click on the map** to set the start and end point for the straight line distance you wish to calculate.

Surakarta, Central Java, Indor

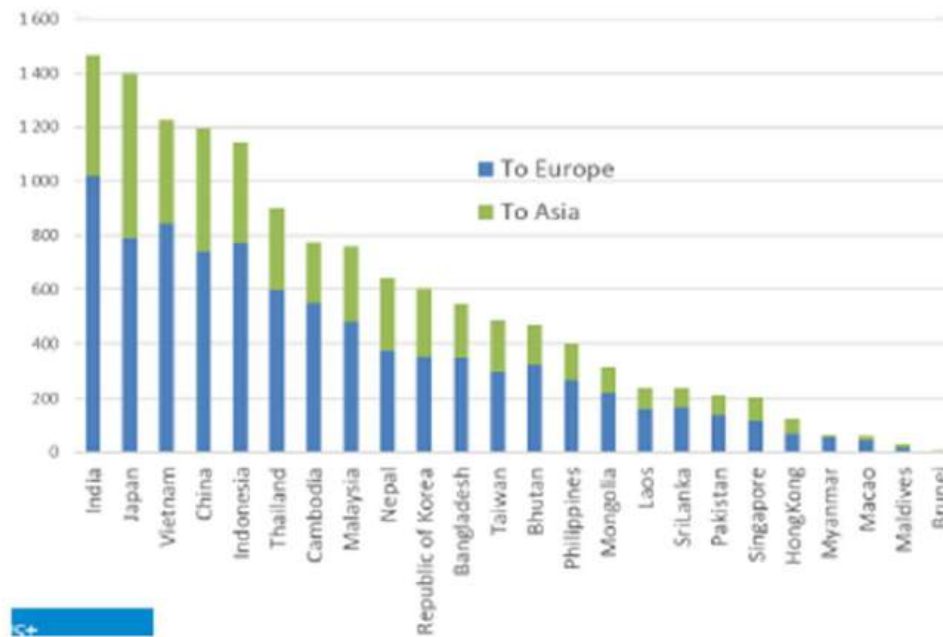
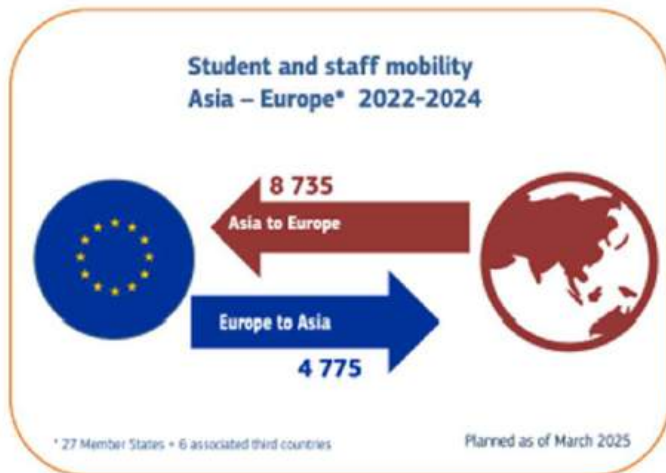
Leipzig, Saxony, Germany

..... **Distance in a straight line**  
**: 11250.73 km**

For grants this distance is an estimate only!

## Statistics

Erasmus+ student and staff mobility between Europe and Asia  
(2021-2024): 1253 projects, 13 510 people moving





# Erasmus+

---

## How to apply?

- **Only HEIs from 33 countries may submit an application.**
- **Project Duration: 24-36 months**
- **HEIs / consortium from 33 countries will submit the proposal to their National Agencies:**
- **<https://erasmus-plus.ec.europa.eu/contacts/national-agencies>**
- Each National Agency in 33 countries has a budget to fund the mobility projects.
- They determine the requirements of the mobility project.
- **Deadline for application:**
- **Opens: 12 November 2025**
- **Closes: 19 February 2026**





# Erasmus+

---

## Tips for applying ICM

- ✦ Find or create PIC (Participant Identification Code) of your university through this website:
- ✦ <https://ec.europa.eu/info/funding-tenders/opportunities/portal/screen/how-to-participate/participant-register>
- ✦ Identify a university in 33 countries to collaborate with;
- ✦ Explore their interest to submit proposal for mobility project;
- ✦ University in partner countries may contact several Higher Education Institutions in 33 countries at the same time;
- ✦ Update University International Office web-site



# Erasmus+

---

## PIC (Participant Identification Code)

- Your organisation needs to be registered and have a 9-digit Participant Identification Code (PIC).
- A **single registration** is required for each organisation in the system – ***one university one PIC number only.***
- PIC search and registration:

<https://ec.europa.eu/info/funding-tenders/opportunities/portal/screen/how-to-participate/participant-register>

## PIC Search

Web-site: <https://ec.europa.eu/info/funding-tenders/opportunities/portal/screen/how-to-participate/participant-register>

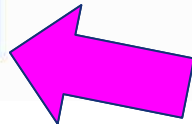


The register contains all participants of EU programmes.

### Is your organisation already registered? PIC search

Please check whether your organisation has already been registered. If so, no need to register it again.

 Find a registered organisation





# Erasmus+

## PIC Status: Declared or Validated

[University of Muhammadiyah Malang](#)

PIC 907793222

Indonesia

Declared

[Contact](#)

VAT: ID 012538438651000 | Registration number: - |

[BADAN WAKAF UNIVERSITY ISLAM INDONESIA \(AL DJAMI'AH AL ISLAMIYAH AL INDONESIA\)](#)

PIC 921377296

Indonesia

Validated

[Contact](#)

VAT: ID011405404542001 | Registration number: - |

## PIC: One University – Once PIC Number

### UNIVERSITAS AIRLANGGA

PIC 920469182

Indonesia

Validated

Contact

VAT: ID737737585619000 | Registration number: - |

### Faculty of Medicine Airlangga University

PIC 937408195

Indonesia



Declared

Contact

Registration number: - |

### Reproductive Health Research Centre Faculty of medicine University of Airlangga

PIC 972698444

Indonesia



Sleeping

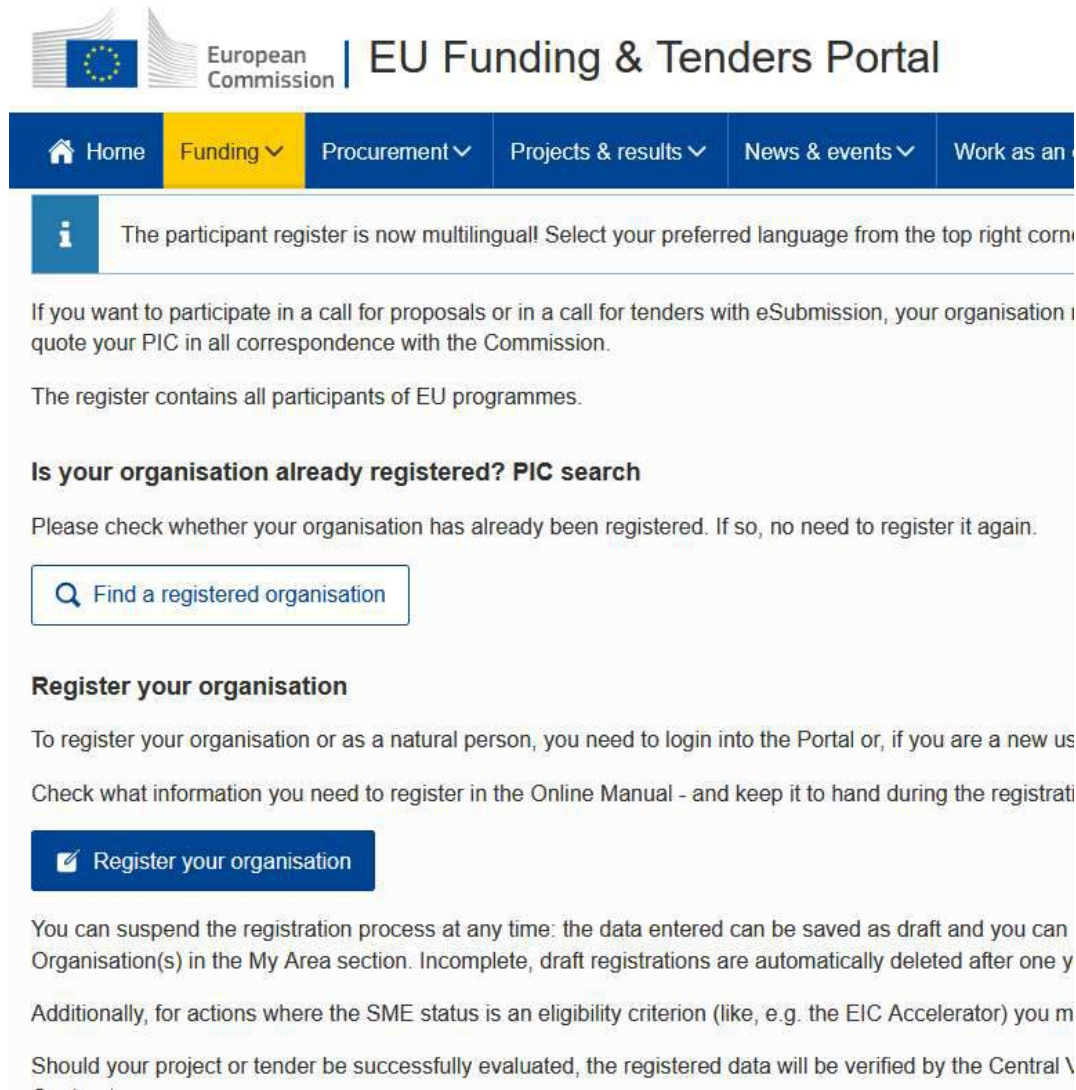
Contact

VAT: not applicable | Registration number: - |



# PIC Registration

<https://ec.europa.eu/info/funding-tenders/opportunities/portal/screen/how-to-participate/participant-register>



The screenshot shows the top of the EU Funding & Tenders Portal. The header includes the European Commission logo and the title "EU Funding & Tenders Portal". Below the header is a navigation bar with links: Home, Funding (highlighted in yellow), Procurement, Projects & results, News & events, and Work as an. A blue box with an information icon contains the text: "The participant register is now multilingual! Select your preferred language from the top right corner." Below this, a paragraph states: "If you want to participate in a call for proposals or in a call for tenders with eSubmission, your organisation must quote your PIC in all correspondence with the Commission. The register contains all participants of EU programmes." A section titled "Is your organisation already registered? PIC search" follows, with the text: "Please check whether your organisation has already been registered. If so, no need to register it again." Below this is a search box with the text "Find a registered organisation". A section titled "Register your organisation" is next, with the text: "To register your organisation or as a natural person, you need to login into the Portal or, if you are a new user, create an account. Check what information you need to register in the Online Manual - and keep it to hand during the registration process." Below this is a blue button with a pencil icon and the text "Register your organisation". A yellow arrow points to this button. Below the button, a paragraph states: "You can suspend the registration process at any time: the data entered can be saved as draft and you can delete Organisation(s) in the My Area section. Incomplete, draft registrations are automatically deleted after one year." Another paragraph states: "Additionally, for actions where the SME status is an eligibility criterion (like, e.g. the EIC Accelerator) you must be a small or medium-sized enterprise (SME). Should your project or tender be successfully evaluated, the registered data will be verified by the Central \



# Erasmus+

## Process to Create a PIC Number First to create EU Login Account

- Each user has to have an EU Login account to log in on the Portal.
- An email confirmation is sent after the Sign Up

**Create an account**

[Help for external users](#)

First name

Last name

E-mail

Confirm e-mail

E-mail language  
English (en)

☐ By checking this box, you acknowledge that you have read and understood the [privacy statement](#)



# Erasmus+

---

## PIC (Participant Identification Code)

- After registration, a unique identifier is assigned to your organisation
- This is the 9-digit **PIC (Participant Identification Code) number** that will be used as a reference by the Commission in any future interactions.
- Please keep the legal data of the organisation and programme related information at hand.
- **You can pause the registration process at any time and continue it later.** The system automatically saves your draft registration and will keep it until you complete it or for up to one year after its last edit.



# Erasmus+

---

## **Example of required documents for PIC registration for Indonesian universities:**

- Statute
- Akta Pendirian Universitas
- Declaration of Legal Entity
- Appointment of Legal Entity
- Tax Number (NPWP)
- Other documents



# Erasmus+

---

## Contact:

If you face difficulties for the **validation** of your PIC number, please send email to:

INTPA PIC MANAGEMENT

[INTPA-PIC-MANAGEMENT@ec.europa.eu](mailto:INTPA-PIC-MANAGEMENT@ec.europa.eu)





# Erasmus+

---

## Disclaimer

- ***This presentation is made for illustration only.***
- **Further detail of Erasmus+ Actions is available thorough the Programme Guide:**
- **[https://erasmus-plus.ec.europa.eu/sites/default/files/2023-04/ErasmusplusProgramme-Guide2023-v3\\_en.pdf](https://erasmus-plus.ec.europa.eu/sites/default/files/2023-04/ErasmusplusProgramme-Guide2023-v3_en.pdf)**
- **National Agencies of 33 countries may determine the requirements of the mobility project (targeted region, level of learners, type of studies, etc).**



# Erasmus+

---



**Contact:**

**Ms Destriani Nugroho**

**Delegation of the European Union**

**To Indonesia and Brunei Darussalam**

**Email: [destriani.nugroho@eeas.europa.eu](mailto:destriani.nugroho@eeas.europa.eu)**